

Solar Power Monitoring System Using IOT

C.Selvi¹, M.Arunkumar², T.Cholan³, B.Vamsikameshwar reddy⁴
*Assisstant, Proffessor¹, UG student^{2,3,4}, Department of, Electronics and Communication Engineering
 Muthayammal Engineering College, Rasipuram*

ABSTRACT - Using the Internet of Things Technology for supervising solar power generation can greatly enhance the performance, monitoring and maintenance of the plant. With advancement of technologies the cost of renewable energy equipment is going down globally encouraging large scale solar plant installations. This massive scale of solar system deployment requires sophisticated systems for automation of the plant monitoring remotely using web based interfaces as majority of them are installed in inaccessible locations and thus unable to be monitored from a dedicated location. The Project is based on implementation of new cost effective methodology based on IoT to remotely monitoring a solar plant for performance evaluation. This will facilitate preventive maintenance, fault detection of the plant in addition to real time monitoring.

Key Words: Power Measurement, Wireless Transmission, Internet Of Things, Thingspeak, ATmega

I.INTRODUCTION

Solar power plants need to be monitored for optimum power output. This helps retrieve efficient power output from power plants while monitoring for faulty solar panels, connections, and dust accumulated on panels lowering output and other such issues affecting solar performance. So here we propose an automated IOT based solar power monitoring system that allows for automated solar power monitoring from anywhere over the internet. We use controller based system to monitor solar panel parameters. Our system constantly monitors the solar panel and transmits the power output to IOT system over the internet. Here we use IOT Thing speak to transmit solar power parameters over the internet to IOT Thing speak server. It now displays these parameters to the user using an effective GUI and also alerts user when the output falls below specific limits. This makes remotely monitoring of solar plants very easy and ensures best power output.

LITERATURE SURVEY

[1] Development of an online monitoring and control system for distributed Renewable Energy Sources (RES) based on Android platform. This method utilizes the Bluetooth interface of Android Tablet of Mobile phone, as a communication link for data exchange with digital hardware of power Conditioning Unit. [2] Introduction to an instant monitoring infrastructure of renewable energy generation system that is constituted with a wind turbine on current and voltage measurements of each renewable source .The related values are measured with the developed sensing circuits and processed by 18F4450 microcontroller of Microchip. The processed parameters are then transmitted to personal computer (PC) over universal series bus (USB) to be saved in database and to observe the system instantly.

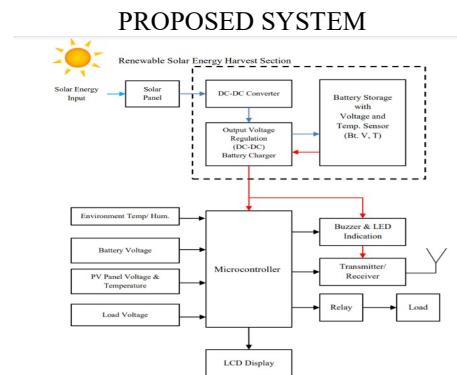


Figure1- Block Diagram of Solar power monitoring system using IoT

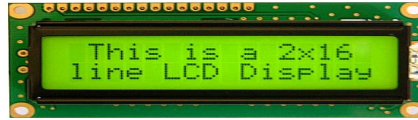
ATMEGA 328

The main purpose of using ATmega 328 is its high functionality with simplicity and familiarity. ATmega 328 bridges the gap between solar panel and IoT(Internet of Things). ATmega 328 is powered with 5 volts dc supply for its operation.

VOLTAGE AND CURRENT SENSOR (INA 219)

As INA219 is current and power sensor which gives the total power consumed by shunt load and gives respective reading in digital form to ATmega 328. ATmega 328, with programme loaded in it, calculates the current and voltage reading of shunt load.

LIQUID CRYSTAL DISPLAY (LCD) LCD



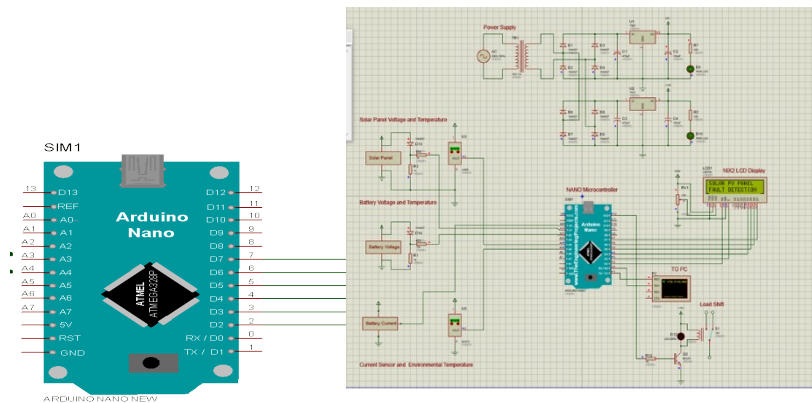
is used for displaying the product name& total cost. When product is put into cart after scanning, it will show the cost and name and if second product is scanned, then second product cost will get added and it will be displayed on LCD.

Wi-Fi MODULE (ESP8266)

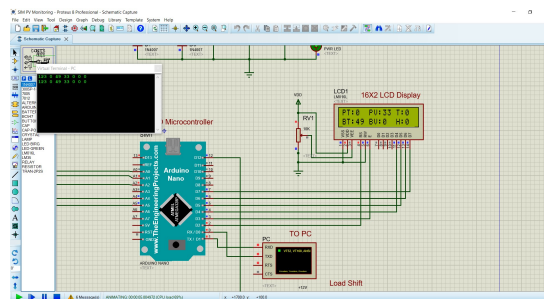
All the calculated data by ATmega 328 is further processed by Wi-Fi Module in order to store on IoT (Internet of Things) Server or Cloud. In order to analyse this data on daily, weekly and monthly basis we are using popular IoT platform

Thingspeak

SYSTEM IMPLEMENTATION



3.7 HOW DOES IT WORK?



Internet of Things (IoT) platform integrates data from the different solar panels and applies analytics to share the most valuable information with applications built to address specific needs. These powerful IoT platforms such as Thingspeak, Microsoft Azure and Google cloud platform etc can pinpoint exactly what information is useful and what can safely be ignored. This information can be used to detect faults, make recommendations, and detect possible problems before they occur. The information picked up by connected sensors enables to make smart decisions based on real-time information, which helps save time and money.

CONCLUSION

As this system keeps continues track of solar power plant ,the daily weekly and monthly analysis becomes easy and efficient also with the help of this analysis it is possible to detect any fault occurred within power plant as the generated power may show some inconsistency in data of Solar power plant.

FUTURE SCOPE

Since the system requires external power supply of 5 volts and 3.3 volts for its operation which can be taken rid of by utilising the power generated by solar panel only. Also with the help of motor and controlling it is possible to track the sun for better power generation. Apart from that by using various Machine Learning algorithms and model it is possible to make system smart enough to take decision about data and performance.

REFERENCES

- [1] Sri Krishna swetha, Kone, Kumar, Sandeep, Mahmood, Md: A study on smart electronics voting machine using face recognition and Aadhar verification with IO. Innov. Electr. Commun. Eng. 2019, 87–95 (2019)
- [2] Deepika, J., Kalaiselvi, S., Mahalakshmi, S., Agnes Shifani, S.: Smart electronic voting system
- [3] Devgirikar, S., Deshmukh, S., Paithankar, V.,Bhawarkar, N.: Advanced electronic voting
- [4] Deepika, J., Kalaiselvi, S., Mahalakshmi, S., Agnes Shifani, S.: Smart electronic voting system based on biometric identification-survey. ICONSTEM- 2017
- [5] Devgirikar, S., Deshmukh, S., Paithankar, V.,Bhawarkar, N.: Advanced electronic voting machine using Internet of Things (IOT). NC-RISE 17 5(9), 83–85
- [6] Rezwani, R., Ahmed, H., Biplop, M.:Biometrically secured electronic voting machine. R10- HTC (2017)
- [7] Lavanya, S.: Trusted secure electronic voting machine. ICONSET 2011 (2011)
- [8] Bohil, J., Henrich, C., Kempka, C.: Enhancing electronic voting machines on the example of bingo voting. IEEE Trans. Inf. Forensics Secur 4(4), 745–750 (2009)
- [9] Bhuvanapriya, R., Rozil Banu, S., Sivapriya, P.: Smart voting. ICCCT 2017 (2017)
- [10] Homepage on Arduino UNO: Available <https://datasheet.octopart.com/A00006/Arduino-datasheet38879526.pdf>
- [11] Homepage on Finger Print Sensor: Available <https://www.sunrom.com/p/finger-print-sensor-r305>
- [12] ESP32Datasheet. Available https://cdn.sparkfun.com/datasheets/IoT/esp32_dat asheet_en.pdf
- [13] Homepage on LCD. Available <https://www.engineersgarage.com/electronic-components/16x2-lcd-module-datasheet>
- [14] Homepage on HTTP. Available. https://www.tutorialspoint.com/http/http_parameter
- [15] Homepage on LCD. Available <https://www.engineersgarage.com/electronic-components/16x2-lcd-module-datasheet>
- [16] Homepage on HTTP. Available. https://www.tutorialspoint.com/http/http_parameters.html
- [17] C.Nagarajan and M.Madheswaran - 'Experimental verification and stability state space analysis of CLL-T Series Parallel Resonant Converter' - Journal of ELECTRICAL ENGINEERING, Vol.63 (6), pp.365-372, Dec.2012.
- [18] C.Nagarajan and M.Madheswaran - 'Performance Analysis of LCL-T Resonant Converter with Fuzzy/PID Using State Space Analysis'- Springer, Electrical Engineering, Vol.93 (3), pp.167-178, September 2011.
- [19] C.Nagarajan and M.Madheswaran - 'Stability Analysis of Series Parallel Resonant Converter with Fuzzy Logic Controller Using State Space Techniques'- Taylor & Francis, Electric Power Components and Systems, Vol.39 (8), pp.780-793, May 2011.
- [20] C.Nagarajan and M.Madheswaran - 'Experimental Study and steady state stability analysis of CLL-T Series Parallel Resonant Converter with Fuzzy controller using State Space Analysis'- Iranian Journal of Electrical & Electronic Engineering, Vol.8 (3), pp.259-267, September 2012.
- [21] Nagarajan C., Neelakrishnan G., Akila P., Fathima U., Sneha S. "Performance Analysis and Implementation of 89C51 Controller Based Solar Tracking System with Boost Converter" Journal of VLSI Design Tools & Technology. 2022; 12(2): 34–41p.
- [22] C. Nagarajan, G.Neelakrishnan, R. Janani, S.Maithili, G. Ramya "Investigation on Fault Analysis for Power Transformers Using Adaptive Differential Relay" Asian Journal of Electrical Science, Vol.11 No.1, pp: 1-8, 2022.
- [23] G.Neelakrishnan, K.Anandhakumar, A.Prathap, S.Prakash "Performance Estimation of cascaded h-bridge MLI for HEV using SVPWM" Suraj Punj Journal for Multidisciplinary Research, 2021, Volume 11, Issue 4, pp:750-756
- [24] G.Neelakrishnan, S.N.Pruthika, P.T.Shalini, S.Soniya, "Perfromance Investigation of T-Source Inverter fed with Solar Cell" Suraj Punj Journal for Multidisciplinary Research, 2021, Volume 11, Issue 4, pp:744-749
- [25] C.Nagarajan and M.Madheswaran, "Analysis and Simulation of LCL Series Resonant Full Bridge Converter Using PWM Technique with Load Independent Operation" has been presented in ICTES'08, a IEEE / IET International Conference organized by M.G.R.University, Chennai.Vol.no.1, pp.190-195, Dec.2007
- [26] M Suganthi, N Ramesh, "Treatment of water using natural zeolite as membrane filter", Journal of Environmental Protection and Ecology, Volume 23, Issue 2, pp: 520-530,2022
- [27] M Suganthi, N Ramesh, CT Sivakumar, K Vidhya, "Physiochemical Analysis of Ground Water used for Domestic needs in the Area of Perundurai in Erode District", International Research Journal of Multidisciplinary Technovation, pp: 630-635, 2019