

Efficient B-Net Algorithm for Multiple Brain Tumors Detection in Using Deep Learning

S.R.Sowmiya¹, P.Shobana², K.Swetha², J.Sathiya Priya².
*Assistant professor, Department of CSE, 2. Final year CSE,
 Dhanalakshmi Srinivasan Engineering College ,Perambalur*

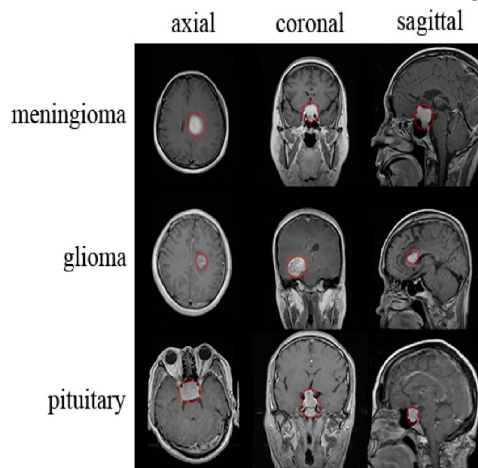
ABSTRACT- Due to their complexity and sensitivity, classifying brain diseases is a very difficult task. Because brain tumors are serious and sometimes fatal, early detection and diagnosis are essential for developing an efficient treatment plan. A vital medical imaging tool, magnetic resonance imaging (MRI) allows for the detailed, non-invasive visualization of the internal structures of the brain. When it comes to diagnosing and treating brain tumors, magnetic resonance imaging (MRI) plays a critical role. Starting with dataset preprocessing, the method applies to MRI scans and clinical data from people with different brain conditions, including cases of tumors and non-tumors. Training and testing sets make up the dataset. MRI tumor detection requires a number of processes, including feature extraction, classification, and image post-processing. For classifying brain images, the system makes use of Convolutional Neural Networks with EfficientNet model a pre-trained model using the approach of transfer learning. The proposed framework not only uses the pre-trained model to improve the performance of training a better model but also uses thresholding to improve the dataset for better accuracy and data augmentation for increasing the number of images in the dataset. Preliminary outcome shows that the family of models of EfficientNet performs better than previous CNN architectures because to scale all dimensions of depth, width, and resolution of an image with a constant ratio it uses the compound coefficient. The results also demonstrated that by scaling the baseline architecture the model is able to capture complicated features and thus the overall performance of the model is improved.

KEYWORDS: Brain tumor classification, convolutional neural network, medical imaging, deep learning, transfer learning.

I. INTRODUCTION

One of the most vital organs in the human body, the brain aids in decision-making and regulates the operation of all other organs. It is principally in charge of managing the daily voluntary and involuntary bodily functions and serves as the central nervous system's command center. The tumor is an uncontrolled, proliferating mass of unwanted tissue growth inside our brain that resembles a fibrous web. Approximately 3,540 children under the age of 15 are diagnosed with brain tumors this year. It is crucial to have a proper understanding of brain tumors and their stages in order to prevent and treat the illness.

An abnormal mass of tissue in which cells grow and multiply uncontrollably, seemingly unchecked by the mechanisms that control normal cells, is called an intracranial tumor, or brain tumor. Although there are over 150 distinct types of brain tumors known to exist, primary and metastatic brain tumors are the two main categories. Tumors that arise from the brain's tissues or the brain's surrounding tissues are referred to as primary brain tumors. Primary tumors can be classified as benign or malignant, glial (made up of glial cells) or non-glial (developed on or in the brain's structures, such as nerves, blood vessels, and glands). Tumors that originate in



other parts of the body, like the breast or lungs, and spread to the brain, usually via the bloodstream, are referred shown in Fig 1.

Fig 1: Brain Tumor Types

II. RELATED WORK

Saeed Mohsen et al.[1] described using hyper-parameter optimization to implement ResNext101_32 × 8d and VGG19 models to improve the accuracy of brain tumor detection and classification. These two models have the benefit of being architecturally simple, which can lower computational cost (training time), and they are based on a transfer learning process. The Kaggle repository contained a dataset that was used for testing and training the models. The first of six steps involved uploading the dataset of MRI images, which had been divided into images for training and testing. Image normalization, or pre-processing the MRI scans, was the second step. Determining the total number of training epochs was the third step. The fourth step involved using a fitting function to train the model with the chosen MRI images. The fifth step was to test the prediction capacity of the VGG19 model using the MRI test images. The final step was to evaluate the performance of the model using different metrics on the MRI test images.

In the clinical field, precise imaging is essential to producing accurate diagnoses as demonstrated by Solanki, Shubhangi, et al. [2]. The techniques used to acquire artifacts, such as CT, PET, and magnetic resonance imaging, have an impact on the effectiveness of clinical images. Real images from a magnetic resonance scan may include a great deal of unnecessary and undesired detail. A consequence of Rician noise is magnetic resonance imaging. This survey encompasses all the noteworthy characteristics and the latest research conducted so far, along with its limitations and challenges. Gaining a better understanding of how to conduct new research in an appropriate manner within a reasonable timeframe will be beneficial to the researchers. A generic approach is still needed, despite the significant contributions made by deep learning approaches. When training and testing are conducted on comparable achievement features (intensity range and resolution), these methodologies yield better results; additionally, even the smallest deviation between the training and testing imaginings has a direct influence on the robustness of the methodologies. Future research could be done to identify brain cancers more accurately, using real patient data as opposed to mediocre methods of capturing images (scanners). Classification accuracy may be improved by combining deep features with handcrafted characteristics.

Shah, et al.,...[3] carried out To diagnose brain tumors, VS-BEAM, a unique computer-aided diagnosis algorithm, has been introduced. To determine whether tumors are present in MRI images, the ensemble architecture combines several models. The final abnormality is determined by the algorithm through a voting mechanism, which increases diagnosis accuracy and efficiency. For effective feature extraction, we incorporate Squeeze and Excitation (SE) Attention Blocks into the CNN (Convolutional Neural Network) network. We came to the conclusion that SE attention combined with CNN is more logical than CNN networks alone. Using various classifier algorithms, ensemble learning is employed by the VS-BEAM algorithm. While the second method, also a dense classifier, approaches the multiclass brain tumor classification problem as three binary class classification problems, the first method uses a classical dense network to solve the problem as a multiclass classification. Lastly, a Bayesian classifier that estimates the posterior distribution is used by the third classifier to categorize the tumor. During the evaluation stage, the suggested method for identifying and dividing up brain tumors in MRI pictures meets high performance standards. The end-to-end model showed encouraging outcomes and might be applied in ongoing clinical studies for computer-assisted brain tumor diagnosis.

A teacher-student-based LCDEiT framework for classifying tumors from brain MRIs was presented by Ferdous et al. [4]. The framework consists of an external attention-based image transformer backbone for image classification, and a gated-pooled CNN-based teacher model for knowledge extraction. The need for the large dataset of vision transformers has been offset by the knowledge gained from the teacher model. By adding external attention to the backbone transformer model, which decreases complexity linearly with respect to the number of patches, the quadratic complexity caused by self-attention in the transformer encoder is removed. According to the findings, the transformer-based student model at the core of the suggested framework produces the best classification results, with F1-scores of 0.978 and 0.937 for the Figshare and BraTS-21 datasets, respectively. This illustrates how well image transformers with robust learners can be applied in the field of medical imaging, where quick computation is a critical requirement to start treating a patient who is in critical condition. To address the challenges associated with a higher misclassification rate for lower sample classes, the imbalance dataset handling technique, such as class-wise augmentation, may be used in the future. Even though the suggested LCDEiT model performed better on two different Figshare and BraTS-21 datasets, the model's universality could still be enhanced by expanding the experimental database.

Two research issues, including the security issue with the IoMT environment and the classification of brain tumors, were resolved by Ramprasad et al. [5]. The goal of this work is to offer a comprehensive solution to these issues. The study focuses on securing brain tumor images through the use of TIWT in the MIW implementation. The purpose of this is to safeguard patient privacy and confidentiality when medical data is

transmitted over the Internet of medical devices. The goal is to ensure that the source image of the brain tumor is transmitted over a secured environment, thereby preventing attackers from seeing the image. Creating a precise system for classifying brain tumors is another goal of the research. It makes use of transfer learning techniques, namely BWO-GA for feature extraction and a transfer learning-based RU-Net model for segmentation. AlexNet, a transfer learning-based network, is then used to classify the segmented tumor region into benign and malignant tumors. The ultimate goal is to increase the accuracy of brain tumor classification, which will allow for early prediction and possibly save lives. The segmentation operation at the IoMT receiver is carried out using the RU-Net model in order to determine the exact location of the tumor. Furthermore, multilevel features are extracted using BWO-GA, and the best features are selected based on attributes found in nature. Furthermore, an AlexNet that is based on transfer learning is trained with the best features for tumor classification.

III. EXISTING METHODOLOGIES

Utilize machine learning algorithms in the current system to classify brain tumors using algorithms for feature extraction and classification. In the field of brain tumor detection from medical images, machine learning algorithms play a critical role in facilitating the early diagnosis and successful treatment of these disorders.

Despite being relatively simple, the K-Nearest Neighbors (K-NN) algorithm continues to be a useful method. It is helpful for finding similar cases within a dataset because it gives a class label to a data point based on the majority class of its closest neighbors in the feature space. AdaBoost and Gradient Boosting are two examples of ensemble methods that have proven effective in increasing classification accuracy by combining the predictions of multiple classifiers. These techniques make use of the advantages of various base classifiers to improve the robustness and generalization of the model. When it comes to brain tumor detection, these machine learning algorithms are a great resource for medical professionals. They help identify brain tumors quickly and accurately, which improves patient outcomes.

Another useful tool is Support Vector Machines (SVM), particularly for binary classification tasks like identifying tumor and non-tumor regions in medical images. To create precise classifications, SVMs can make use of a variety of features that have been extracted from the images, such as texture, intensity, and shape descriptors.

Decision trees and random forests are also frequently used. They can be applied to classification tasks and have the advantage of feature selection. These algorithms help distinguish between regions that are tumorous and those that are not, using features and attributes extracted from medical images.

IV. PROPOSED METHODOLOGIES

To determine whether the brain contains tumors or other abnormal growths, brain tumor detection is an essential medical procedure. For successful treatment and good patient outcomes, brain tumors must be identified as soon as possible. The method that is most frequently used makes use of medical imaging techniques, specifically CT and MRI scans. Trained radiologists and physicians can see and locate tumors thanks to these non-invasive techniques that produce detailed images of the brain. In order to help radiologists interpret medical images, machine learning and artificial intelligence—including deep learning models like Convolutional Neural Networks (CNNs)—have been used in increasing numbers. By automatically identifying and categorizing tumors from photos, these models increase accuracy and efficiency. The process of creating effective treatment plans, which may involve radiation therapy, chemotherapy, surgery, or a combination of these methods, depends on the accurate detection of brain tumors. To improve patient outcomes and quality of life, early diagnosis and detection are essential.

"Brain Tumor Detection Using Transfer Learning," the name of the proposed system, aims to greatly improve the effectiveness and precision of brain tumor detection in medical imaging. Using pre-trained deep learning models on large datasets and fine-tuning them for the specific task of brain tumor detection is how this system takes advantage of the power of transfer learning. Data collection and preprocessing are crucial steps in the system architecture. An array of MRI scan images, both with and without tumors, is collected. Preprocessing techniques include data augmentation, pixel normalization, and image resizing to improve the quality and diversity of the dataset. The transfer learning approach is the system's central component. Here, the fundamental architecture is a pre-trained deep learning model, like VGG16, Inception. The brain tumor detection task leverages features and knowledge extracted from a large dataset in other domains. The pre-trained model's convolutional layers extract features, and the fully connected layers adjust the model to the intricacies of brain tumor classification. This quickens the development process and enhances the model's efficacious brain tumor detection capabilities. The system's strength is its ability to achieve high accuracy with a significant reduction in the need for a large dataset dedicated to brain tumor images.

The dataset is divided into three separate subsets in order to thoroughly assess the system's efficacy and capacity for generalization: training, validation, and testing. The robustness of the model can also be verified and the chance of overfitting reduced by using cross-validation techniques. Another crucial component of fine-tuning is hyperparameter tuning, which entails optimizing variables like learning rates, batch sizes, and the use of regularization strategies. This fine-tuning procedure is essential to guaranteeing optimal performance and an

efficient convergence of the model. The next step involves model evaluation, in which the accuracy, precision, recall, and F1-score—among other established metrics—are used to evaluate the system's performance. This assessment is carried out on the specific testing dataset, which enables a precise comprehension of the system's capacity to accurately identify brain tumors. Additionally, this system can expedite the development of brain tumour detection models and make them accessible for real-world medical applications, ultimately improving patient care and outcomes. The proposed model is shown in fig 2.

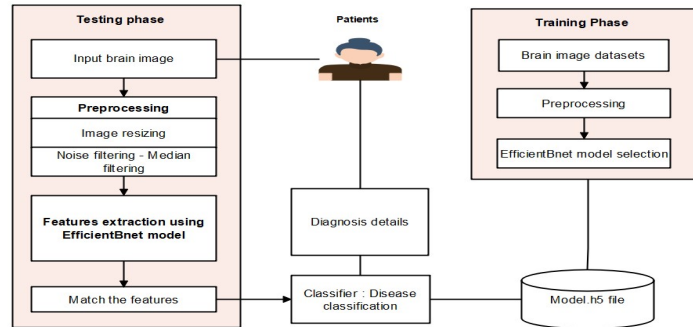


Fig 2: Proposed Block Diagram

Fig 2, images are collected from KAGGLE websites related to brain tumors such as Glioma tumor, Meningioma tumor, Pituitary tumor and No tumor. And then perform preprocessing steps such as noise removal using median filtering algorithm. Finally select the pretrained model such as EfficientNet model. Based on tumor classification, calculate the performance system in terms of accuracy and confusion matrix. In testing phase, input the brain image and perform classification using best model file. Finally predict the tumors and provide the precaution details

EFFICIENT NET MODEL

To leverage the EfficientNet model for brain tumor detection, the process begins with assembling a dataset of brain MRI images, each accurately labeled to denote the presence or absence of tumors. The dataset undergoes meticulous preprocessing to ensure uniformity in dimensions, contrast adjustments, and normalization of intensity values, enhancing the model's ability to discern relevant features. The selection of the appropriate EfficientNet variant, ranging from B0 to B7, is crucial and depends on the dataset's size and complexity. Starting with a smaller variant like B0 is advisable for smaller datasets, progressively scaling up as needed. The EfficientNet architecture's balanced scaling of depth, width, and resolution ensures optimal performance while efficiently utilizing computational resources. Training the model involves feeding the preprocessed MRI images into the EfficientNet network, iteratively adjusting the model's parameters through backpropagation to minimize classification errors. Fine-tuning hyperparameters and monitoring model performance through validation metrics are essential steps in refining the model's accuracy. Ultimately, the trained EfficientNet model can effectively analyze brain MRI images, aiding in the accurate detection and diagnosis of brain tumors, thereby facilitating timely medical intervention and treatment. EfficientNet uses Mobile Inverted Bottleneck (MBConv) layers, which are a combination of depth-wise separable convolutions and inverted residual blocks. Additionally, the model architecture uses the Squeeze-and-Excitation (SE) optimization to further enhance the model's performance.

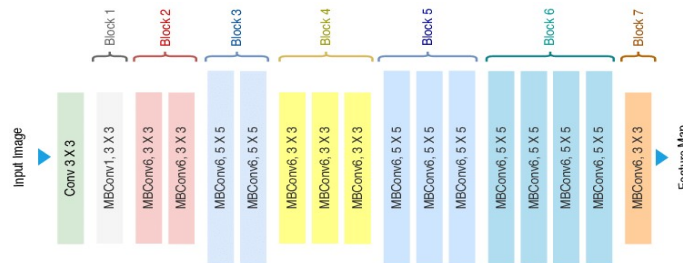


Fig 3: Efficient Net Architecture

IV. CONCLUSION

In conclusion, the utilization of the Efficient Net models for brain tumour detection represents a significant advancement in the field of medical imaging and healthcare. These deep learning models, renowned for their efficacy in image analysis, offer valuable tools to aid medical professionals in the early and accurate diagnosis of brain tumors. Efficient Net model, with its well-established architecture and strong image classification capabilities, provides a solid foundation for this critical task. Its adaptability and versatility make it a reliable choice for classifying brain MRI and CT scans, enhancing the speed and accuracy of tumour identification. The Efficient net model can be customized and fine-tuned to accommodate specific dataset

requirements, allowing for precise brain tumour detection while adhering to ethical and regulatory guidelines in healthcare. Its adaptability extends to various medical imaging tasks, including the detection of abnormalities in X-rays and MRI scans. From the model implementation, Efficient net model provided improved efficiency in disease prediction. So user can input the image and classified brain tumour types with diagnosis details.

REFERENCES

- [1] Mohsen, Saeed, et al. "Brain Tumor Classification Using Hybrid Single Image Super-Resolution Technique with ResNext101_32x8d and VGG19 Pre-Trained Models." IEEE Access (2023).
- [2] Solanki, Shubhangi, et al. "Brain Tumor Detection and Classification using Intelligence Techniques: An Overview." IEEE Access (2023).
- [3] Shah, S. Muhammad Ahmed Hassan, et al. "Classifying and Localizing Abnormalities in Brain MRI using Channel Attention Based Semi-Bayesian Ensemble Voting Mechanism and Convolutional Auto-Encoder." IEEE Access (2023).
- [4] Ferdous, Gazi Jannatul, et al. "LCDEIT: A Linear Complexity Data-Efficient Image Transformer for MRI Brain Tumor Classification." IEEE Access 11 (2023): 20337-20350.
- [5] Ramprasad, M. V. S., Md Zia Ur Rahman, and Masreshaw D. Bayleyegn. "SBTC-Net: Secured Brain Tumor Segmentation and Classification Using Black Widow with Genetic Optimization in IoMT." IEEE Access (2023).
- [6] Mohammed, Yahya MA, Said El Garouani, and Ismail Jellouli. "A survey of methods for brain tumor segmentation-based MRI images." Journal of Computational Design and Engineering 10.1 (2023): 266-293.
- [7] Kazerooni, Anahita Fathi, et al. "The Brain Tumor Segmentation (BraTS) Challenge 2023: Focus on Pediatrics (CBTN-CONNECT-DIPGR-ASNR-MICCAI BraTS-PEDs)." ArXiv (2023).
- [8] Chang, Yankang, et al. "Dpafnet: A residual dual-path attention-fusion convolutional neural network for multimodal brain tumor segmentation." Biomedical Signal Processing and Control 79 (2023): 104037.
- [9] Moawad, Ahmed W., et al. "The Brain Tumor Segmentation (BraTS-METS) Challenge 2023: Brain Metastasis Segmentation on Pre-treatment MRI." ArXiv (2023).
- [10] Peng, Yanjun, and Jindong Sun. "The multimodal MRI brain tumor segmentation based on AD-Net." Biomedical Signal Processing and Control 80 (2023): 104336.
- [11] C.Nagarajan and M.Madheswaran - 'Experimental verification and stability state space analysis of CLL-T Series Parallel Resonant Converter' - Journal of ELECTRICAL ENGINEERING, Vol.63 (6), pp.365-372, Dec.2012.
- [12] C.Nagarajan and M.Madheswaran - 'Performance Analysis of LCL-T Resonant Converter with Fuzzy/PID Using State Space Analysis' - Springer, Electrical Engineering, Vol.93 (3), pp.167-178, September 2011.
- [13] C.Nagarajan and M.Madheswaran - 'Stability Analysis of Series Parallel Resonant Converter with Fuzzy Logic Controller Using State Space Techniques' - Taylor & Francis, Electric Power Components and Systems, Vol.39 (8), pp.780-793, May 2011.
- [14] C.Nagarajan and M.Madheswaran - 'Experimental Study and steady state stability analysis of CLL-T Series Parallel Resonant Converter with Fuzzy controller using State Space Analysis' - Iranian Journal of Electrical & Electronic Engineering, Vol.8 (3), pp.259-267, September 2012.
- [15] Nagarajan C., Neelakrishnan G., Akila P., Fathima U., Sneha S. "Performance Analysis and Implementation of 89C51 Controller Based Solar Tracking System with Boost Converter" Journal of VLSI Design Tools & Technology. 2022; 12(2): 34-41p.
- [16] C. Nagarajan, G.Neelakrishnan, R. Janani, S.Maithili, G. Ramya "Investigation on Fault Analysis for Power Transformers Using Adaptive Differential Relay" Asian Journal of Electrical Science, Vol.11 No.1, pp: 1-8, 2022.
- [17] G.Neelakrishnan, K.Anandhakumar, A.Prathap, S.Prakash "Performance Estimation of cascaded h-bridge MLI for HEV using SVPWM" Suraj Punj Journal for Multidisciplinary Research, 2021, Volume 11, Issue 4, pp:750-756
- [18] G.Neelakrishnan, S.N.Pruthika, P.T.Shalini, S.Soniya, "Performance Investigation of T-Source Inverter fed with Solar Cell" Suraj Punj Journal for Multidisciplinary Research, 2021, Volume 11, Issue 4, pp:744-749
- [19] C.Nagarajan and M.Madheswaran, "Analysis and Simulation of LCL Series Resonant Full Bridge Converter Using PWM Technique with Load Independent Operation" has been presented in ICTES'08, a IEEE / IET International Conference organized by M.G.R.University, Chennai.Vol.no.1, pp.190-195, Dec.2007
- [20] M Suganthi, N Ramesh, "Treatment of water using natural zeolite as membrane filter", Journal of Environmental Protection and Ecology, Volume 23, Issue 2, pp: 520-530,2022
- [21] M Suganthi, N Ramesh, CT Sivakumar, K Vidhya, "Physiochemical Analysis of Ground Water used for Domestic needs in the Area of Perundurai in Erode District", International Research Journal of Multidisciplinary Technovation, pp: 630-635, 2019
- [22] Pacheco, Bruno Machado, Guilherme de Souza e Cassia, and Danilo Silva. "Towards fully automated deep-learning-based brain tumor segmentation: Is brain extraction still necessary?." Biomedical Signal Processing and Control 82 (2023): 104514.
- [23] Li, Xiang, et al. "MSFR-Net: Multi-modality and single-modality feature recalibration network for brain tumor segmentation." Medical Physics 50.4 (2023): 2249-2262.
- [24] Huang, Ling, Su Ruan, and Thierry Denœux. "Semi-supervised multiple evidence fusion for brain tumor segmentation." Neurocomputing 535 (2023): 40-52.
- [25] Fang, Lingling, and Xin Wang. "Multi-input Unet model based on the integrated block and the aggregation connection for MRI brain tumor segmentation." Biomedical Signal Processing and Control 79 (2023): 104027.
- [26] Boyd, Aidan, et al. "Expert-level pediatric brain tumor segmentation in a limited data scenario with stepwise transfer learning." medRxiv (2023).
- [27] Krishnapriya, Srigiri, and Yepuganti Karuna. "A survey of deep learning for MRI brain tumor segmentation methods: Trends, challenges, and future directions." Health and Technology 13.2 (2023): 181-201.
- [28] Ullah, Faizan, et al. "Brain tumor segmentation using a patch-based convolutional neural network: a big data analysis approach." Mathematics 11.7 (2023): 1635.
- [29] Balamurugan, T., and E. Gnanamanoharan. "Brain tumor segmentation and classification using hybrid deep CNN with LuNetClassifier." Neural Computing and Applications 35.6 (2023): 4739-4753.
- [30] Zhao, Junting, et al. "Uncertainty-Aware Multi-Dimensional Mutual Learning for Brain and Brain Tumor Segmentation." IEEE Journal of Biomedical and Health Informatics (2023).
- [31] Choi, Yoonseok, et al. "A Single Stage Knowledge Distillation Network for Brain Tumor Segmentation on Limited MR Image Modalities." Computer Methods and Programs in Biomedicine (2023): 107644.